



RMT SOLS & TERRITOIRES: A FRENCH NETWORK OF INSTITUTIONS FOCUSED ON THE COLLECTION AND USE OF SOIL DATA FOR LOCAL POLICIES

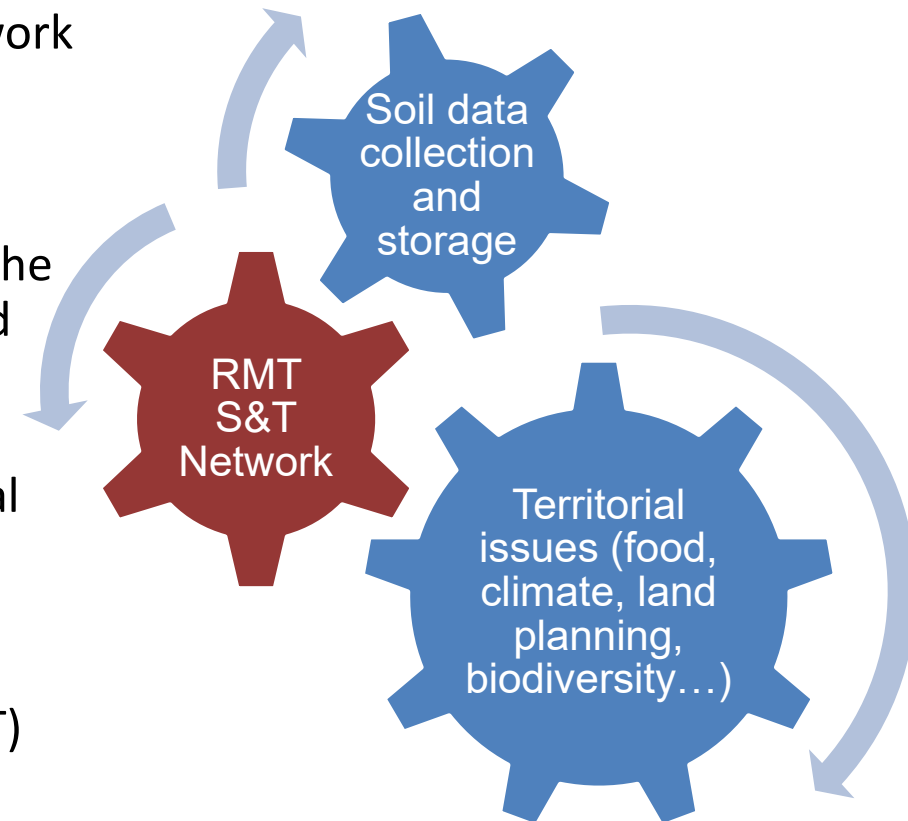
Antonio Bispo, Joëlle Sauter, Laure Soucémarianadin, Elisa Marraccini, Blandine Lemerrier, Bertrand Laroche, Jean Luc Fort, Christophe Ducommun, Noémie Pousse, Eric Lucot, Philippe Lagacherie and Marjorie Ubertosi

INRAE, CRAGE, CRANA, ACTA, UniLaSalle, Institut Agro Agrocampus Ouest, ONF, Université de Franche Comté, AgroSup Dijon

French context



- Since 2001, soil data have been collected in the framework of the Soil Scientific Interest Groupment (GIS Sol, www.gissol.fr)
- Data collection is operated by regional partners under the coordination of INRAE according to national harmonized protocols
- Simultaneously, awareness on the role of soil in national and local policies has been raised
- The French Ministry of Agriculture encouraged the creation of a national “joint technology networks” (RMT) to fill the gap between soil data collection and use

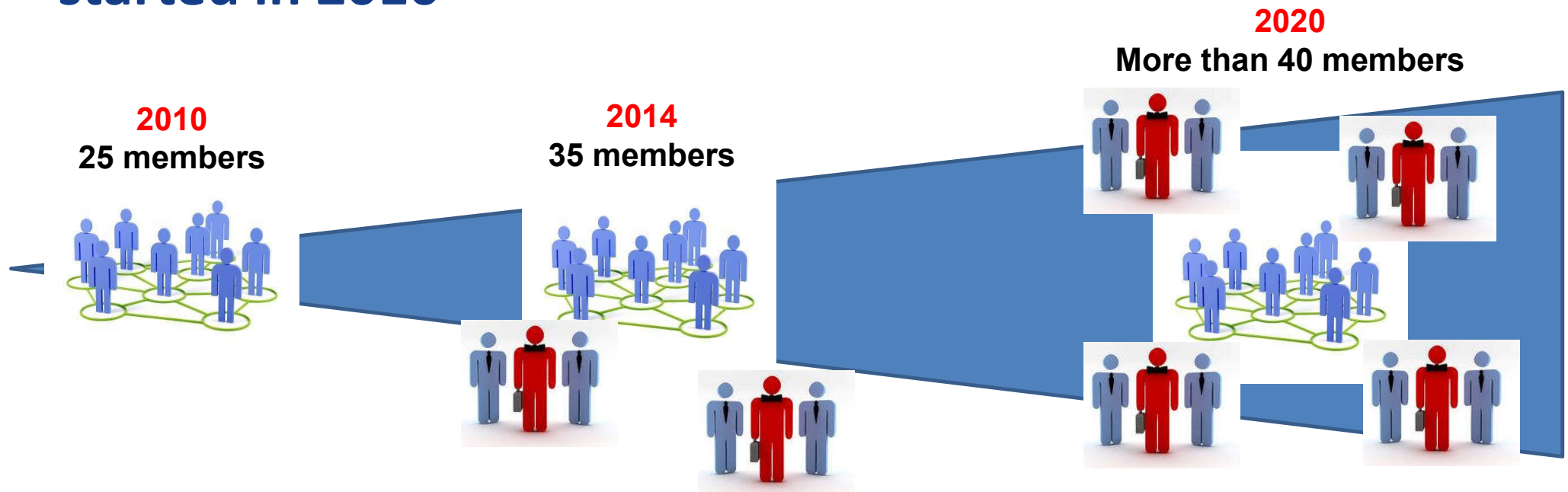




Sols & Territoires
Réseau Mixte Technologique



A network of institutions that started in 2010



A diversity of organisms with different skills:

- organisms involved in agricultural and rural development
- agricultural education institutions
- research teams or institutes to support applied research on key topics

Four main objectives

- **Guarantee nationwide access to soil data** for all territorial actors
- **Promote the production of soil data** at needed resolution levels according to end-users



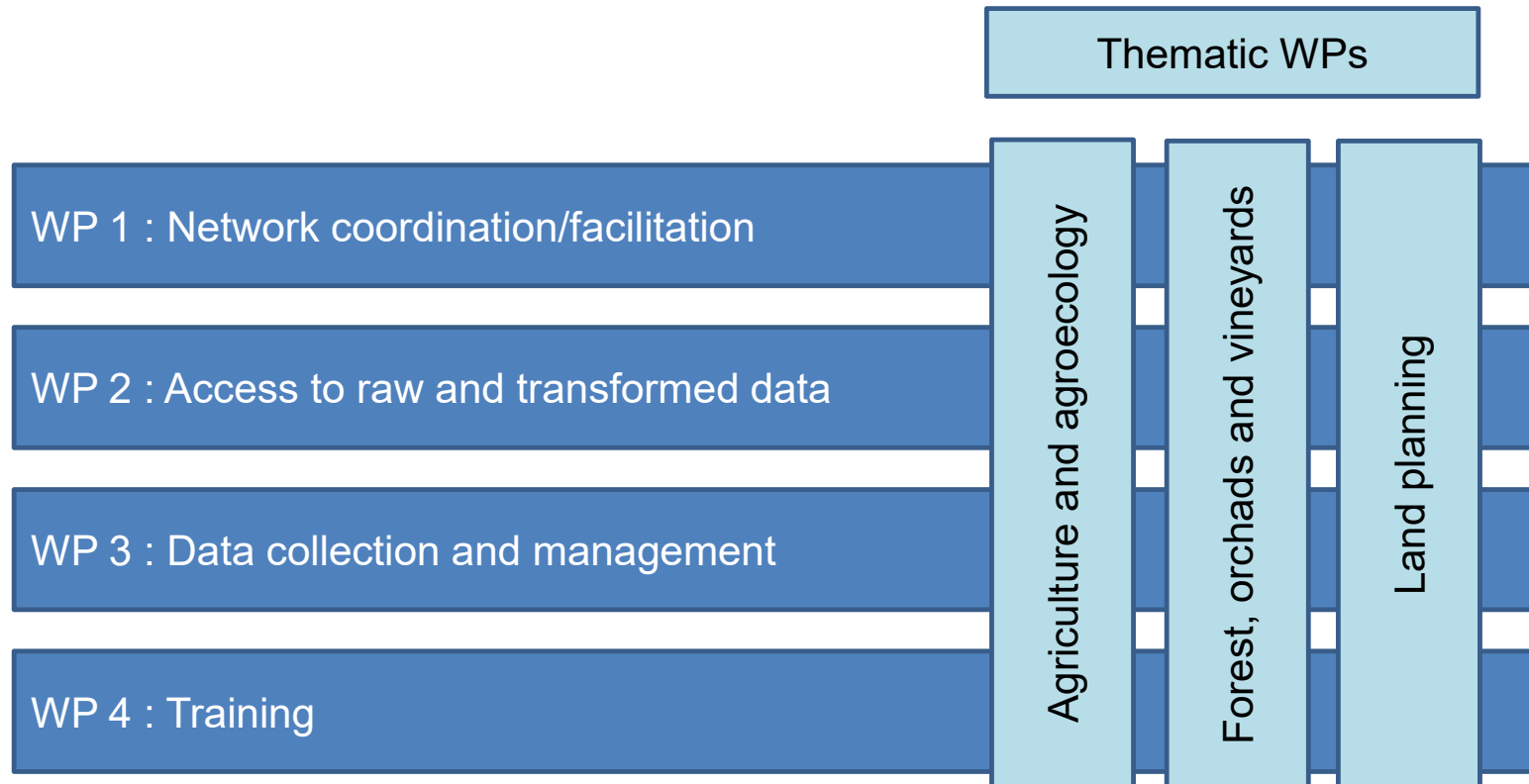
- **Develop and transfer knowledge and methods** to facilitate the use of soil data
- **Ensure, maintain and/or reinforce local and regional pedological expertise**



Our organization



Sols & Territoires
Réseau Mixte Technologique



Main achievements - Projects

• TypTerres

- Derive agronomic soil typologies from national soil databases
- Support the development of agronomical tools for farmers

• ABC'Terre - SOC and GhGs calculator

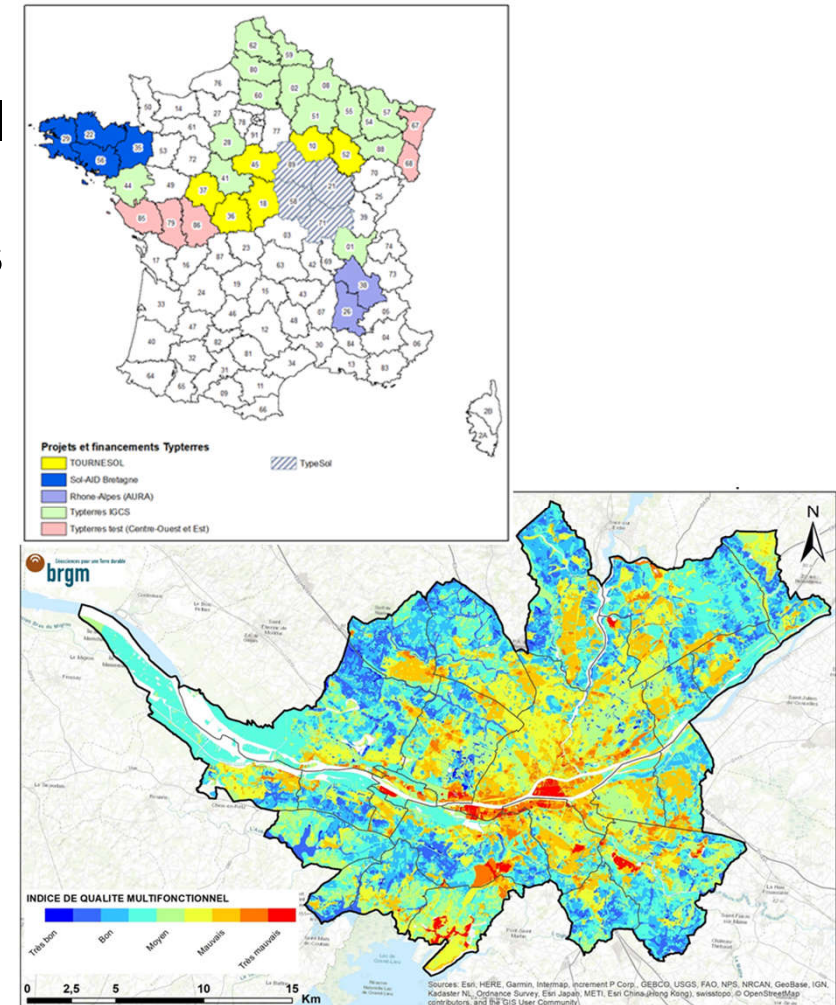
- Model SOC evolution depending on soil types and agricultural practices
- Identify/discuss possible territorial scenario

• MUSE - Soil ecosystem services (ES) mapping for land planning

- Use soil data to spatialize ES
- Multifunctionality maps



Sols & Territoires



Main achievements - Communication & Training

• Publications

- Soil maps and data
- How to use of soil data
- Available data and their possible uses in France
- Status and future of soil mapping in France
- ...

• Webinars

- Use of soil data
- Digital soil mapping
- ...

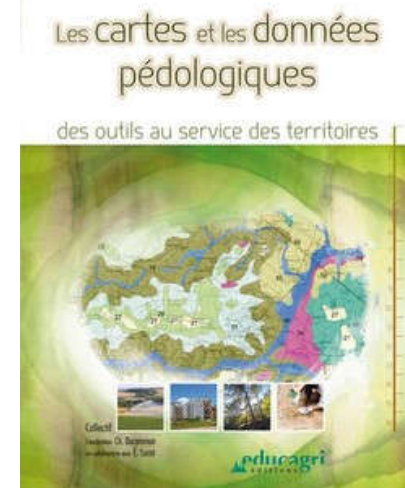
• Regional and national surveys to identify

- New issues to be investigated
- Data availability and needed developments
- ...



Sols & Territoires

Réseau Mixte Technologique

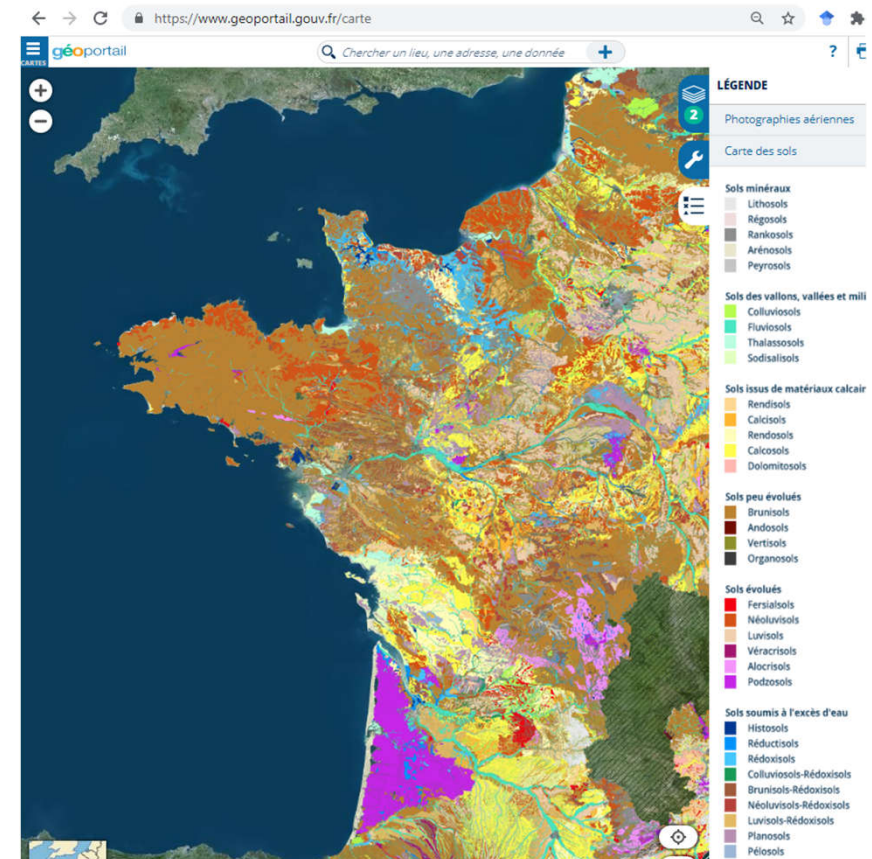


Main achievements - Data diffusion

- Legal status of soil data
- Negotiation with local data owners/managers
- Access to existing maps/data
 - Publication of data on the national geographical portal
 - Access to soil data through dataverses
 - ...
- Work on data interoperability



<https://www.geoportail.gouv.fr/carte>

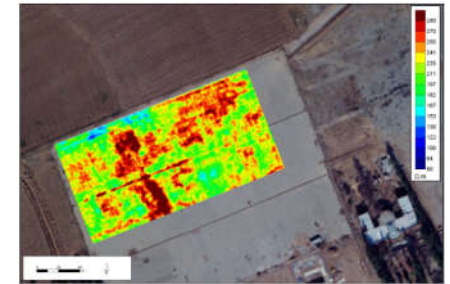


Workplan for the future!

- Data rescue, data access and interoperability
- Development and promotion of DSM and the use of new data (e.g. remote sensing, sensors)
- Use of soil data to manage forest/urban soils
- Involvement into National collaborations
 - Awareness raising (e.g. project “e-Sol” on the development of a collaborative web platform on soil)
 - Development of citizen science protocols (e.g. project “Clés de sol”)
 - Training and teaching activities (e.g. project “PromoSolEduc”)



Sols & Territoires
Réseau Mixte Technologique





**Thank you for
your attention**